



EMDC EASTERN MAINE
DEVELOPMENT CORPORATION

COLLABORATIVE COMMUNICATION FOR HOUSING SOLUTIONS

THE VALUE OF NETWORKING



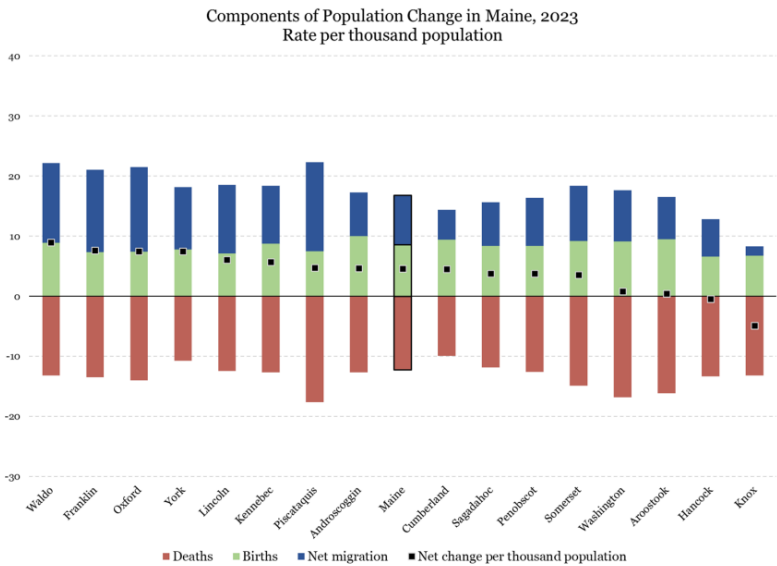
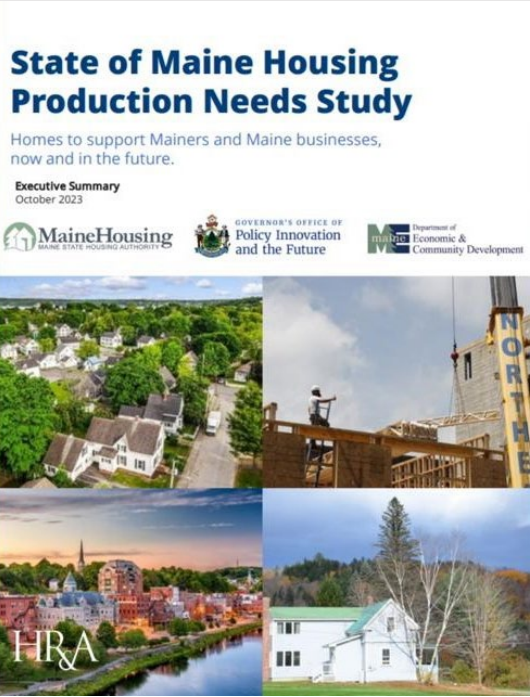
HISTORICAL CONTEXT OF HOUSING CHALLENGES

- Economic Transformations
- Legacy of Policy Decisions
- Community Impact



STATE INITIATIVES AND HOUSING AFTER COVID-19

2023 HOUSING PRODUCTION NEEDS



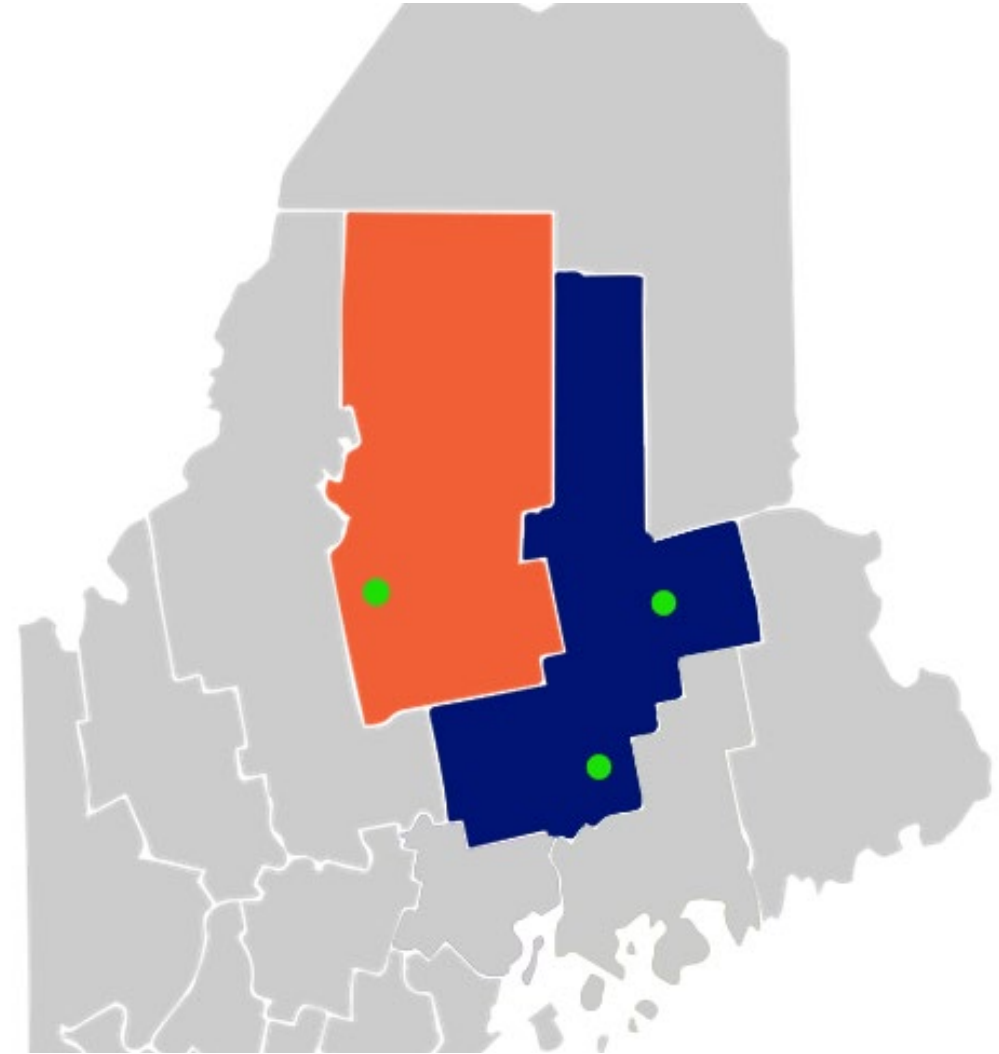
U.S. CENSUS, MAINE ECONOMIST



EMDC'S WORK WITH HOP FUNDS

EMDC has been working to address housing challenges in Greenville, Lincoln, Old Town, and Beyond.

- **Hosted Collaborative Events:** Organized three, sub-regional housing information and networking events, bringing together community leaders, developers, investors, and construction professionals to assess housing needs and foster partnerships. Now working on a larger, regional summit.
- **Created Housing Profiles:** Compiled detailed housing profiles for all towns in Penobscot and Piscataquis counties, using U.S. Census Bureau data and the Maine Housing Study to project housing needs for each town for 2030.
- **Guiding Future Efforts:** Leveraged data and insights from these initiatives, zoning, and land use ordinances to identify priorities, inform strategic planning, and build momentum for addressing Maine's housing crisis in our more rural parts of the state.



THE WORKSHOP APPROACH

- Look for your contacts
- Don't be afraid of a phone call
- Be prepared



Key Takeaways

- The people in attendance all agreed old housing stock is an issue and the costs add up too much to fix the issues.
- There are more jobs than there is housing availability.
- Municipalities don't have to go it alone. We're ready to help each other.
- More Conversations are needed.

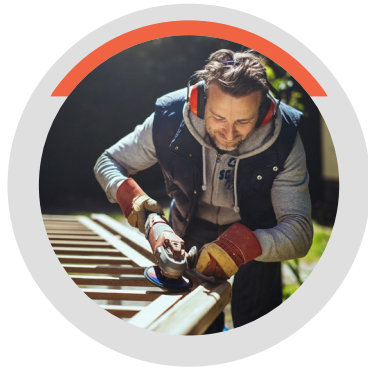


THE IMPORTANCE OF TRANSPARENT COMMUNICATION



FOSTERING TRUST AND UNITY

Breaking Down Barriers



LEVERAGING DIVERSE EXPERTISE

Merging of talents



RAPID INFORMATION SHARING

Staying updated on policies,
funding, and emerging trends
is essential



EMPOWERING COMMUNITIES

Encouraging open dialogue
and storytelling fosters
empathy and drives collective
action.



WHERE DO WE GO FROM HERE?

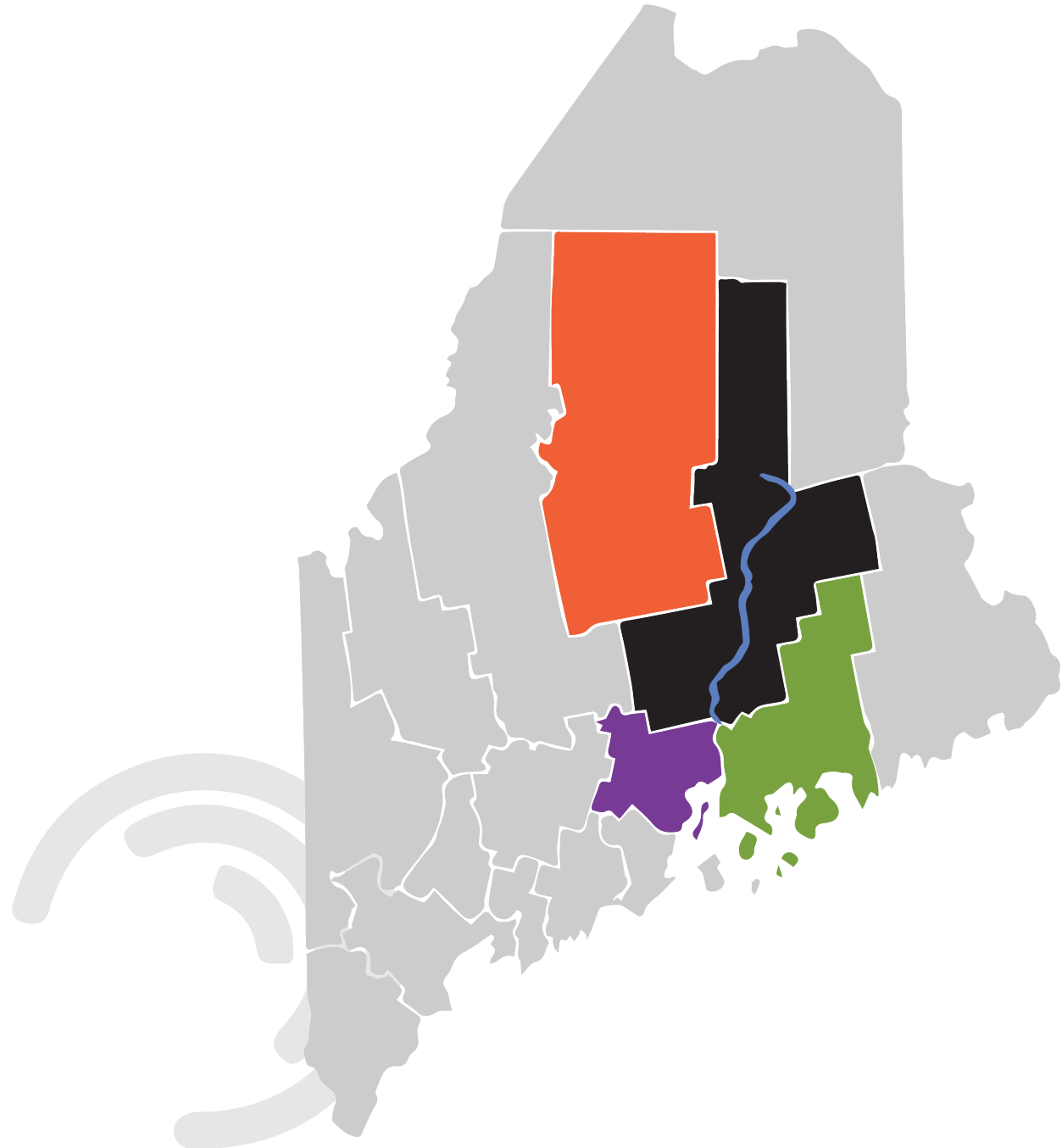
Engage, Reach Out, Be Casual.



Q&A AND NEXT STEPS

More Networking and continuous communication!

- In Person
- News-Letter
- Email Updates
- Website infographics



Piscataquis
3,961 sq. miles
Population of 16,800
4.2 people /sq. mile

Penobscot
3,397 sq. miles
Population of 151,096
44.5 people /sq. mile

Hancock
1,587 sq. miles
Population of 54,811
34.5 people /sq. mile

Waldo
730 sq. miles
Population of 39,694
54.4 people /sq. mile

Penobscot River
109 miles long





EMDC EASTERN MAINE
DEVELOPMENT CORPORATION



THANK YOU!



HEY@EMDC.ORG



[HTTP://WWW.EMDC.ORG/](http://www.emdc.org/)